

Main Features

- PCI Express bus 2.0 compliant
- Speeds up to 921.6 kbps for extremely fast data transmission
- Supports any baud rate setting
- 8 x RS-232 ports
- XR17V358 UART with 256-byte FIFOs
- Supports Windows XP/7/10, and Linux operating systems
- Industrial design, manufactured in Cadmus Taiwan

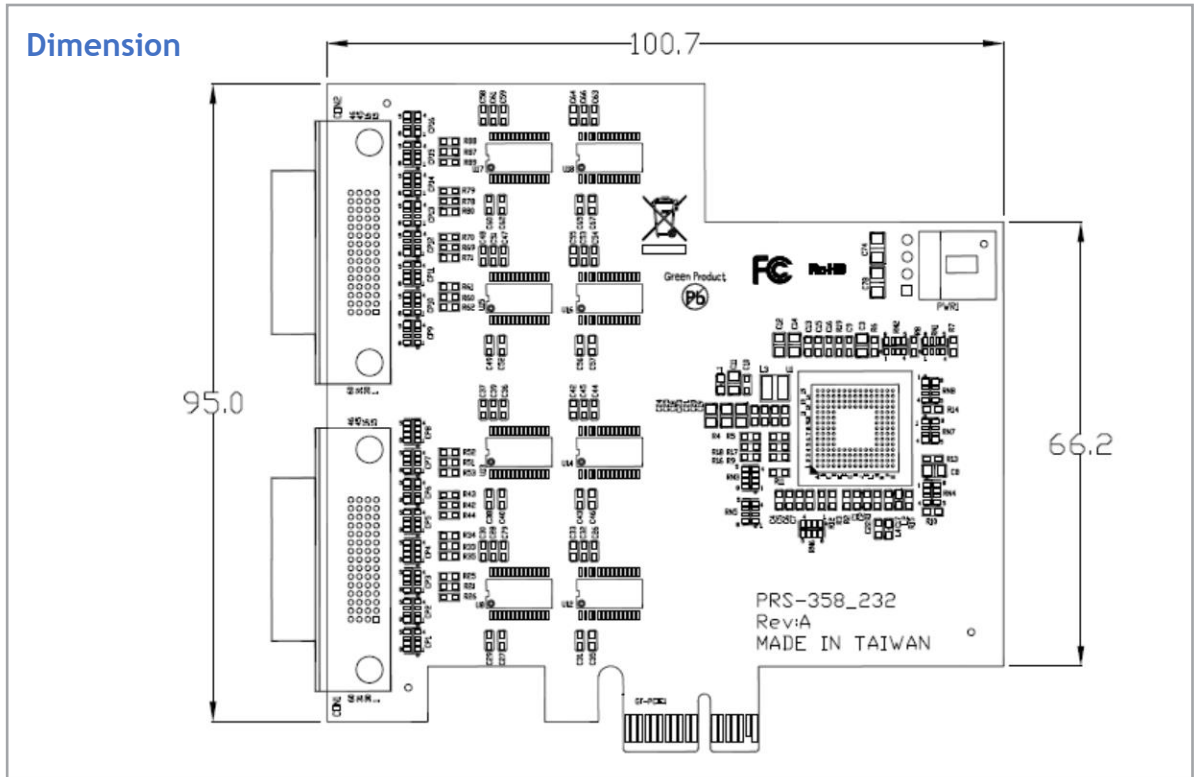
Product Overview

The PRS358-232 PCI Express 8-port serial I/O card is a high-speed serial I/O expansion card for PCI Express bus. Connecting to a PCI Express bus on your computer, the PCI Express 8-port serial I/O card instantly adds eight serial I/O communication ports to your system.

Featuring high data transmission speeds (up to 921.6 kbps) and high-performance XR17V358 UARTs with 256-byte FIFOs to reduce CPU load, provide high efficient solution for serial data communication and industrial automation applications.

Specifications

Module Name	PRS358-232
Bus Type	PCI-Express x1
Form Factor	Mini PCIe full size
Input interface	PCI Express 2.0
Output Interface	RS232 x 8 port
Output Connector	Two LFH connector
Comm. Controller	XR17V358
Dimensions	107 X 95 (mm)
Transfer speed	50 bps ~ 921.6 kbps
Compatible Operating System	Windows XP
	Windows 7
	Windows 10
	Linux
Working Temperature	-40°C-85°C



Ordering Information

Front view

PRS358-232

- PCI Express x1 interface to 8 port RS232



Optional Accessory

60 pin LFH connector to DB9M x4 cable L : 15 cm

