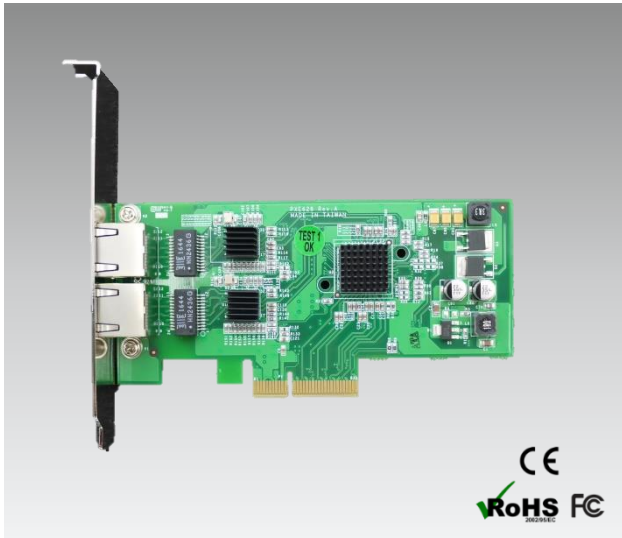


# PXE628

## 2 PORT 10/100/1000MBPS RJ45 COPPER NETWORK CARD



### Main Features

- Low profile dual port PCIe network adapter card with Intel I210-AT Chipset
- Provides fully compliant 10/100/1000 RJ-45 Ethernet port through single PCIe slot
- PCI Express x4 Gen2 (5GT/s)
- Support Wake-on-Lan and PXE network boot support
- Compliant with IEEE802.3, IEEE802.3u, IEEE802.3ab
- IEEE1588 support

### Product Overview

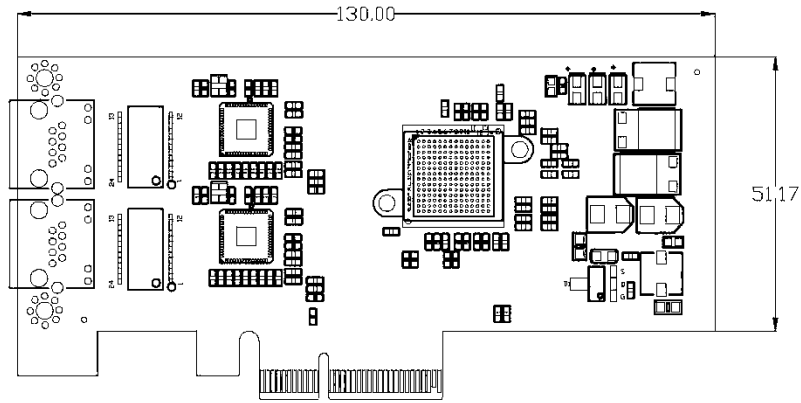
Cadmus's PXE628 - PCI Express Gigabit Ethernet card utilizes the Intel® I210-AT chipset, delivering the power, performance and enhanced capabilities you need for dependable network connections to your server or computer. Compliant with IEEE 802.3/u/ab standards, the GbE network card provides an effective upgrade or replacement network port, with a maximum throughput of up to 1000Mbps in each direction.

The PXE628 provides many advanced features to support load-balancing the flow of network traffic, to enhance throughput and provide greater data reliability. It also supports Audio-Video Bridging (AVB) to enable tightly controlled media stream synchronization, buffering and resource reservation.

### Specifications

Chipset	Intel I210-AT Gigabit Controller
Bus Interface	PCI-Express x4 (x8 x16 PCI Express slots)
Whole Duplex	Full Duplex Flow Control
Network Interface Type	RJ-45 Copper *2
Transmission Speed	10/100/1000Mbps
Transmission Medium Type	100, 1000Mbps
Network Standard	IEEE802.3 (10BASE-T, 100BASE-T, 1000BASE-T)
Module	10/100/1000BASE-T
Compatible Operating System	Windows XP / 7 / 8 / 8.1 / 10
	Windows Server 2003 / 2008 R2 / 2012 R2 / 2016 / 2019
	Linux (latest ver. 24.5) or check Intel official website
	More software/driver support: <a href="https://ark.intel.com/content/www/us/en/ark/products/64400/intel-ethernet-controller-i210-at.html">https://ark.intel.com/content/www/us/en/ark/products/64400/intel-ethernet-controller-i210-at.html</a>
Working Temperature	0°C-70°C

## Dimension



## Ordering Information

### PXE628

- PCIe4 Gen 2
- 2 ports RJ45 with Intel I210AT Controller
- Support Wake-on-Lan