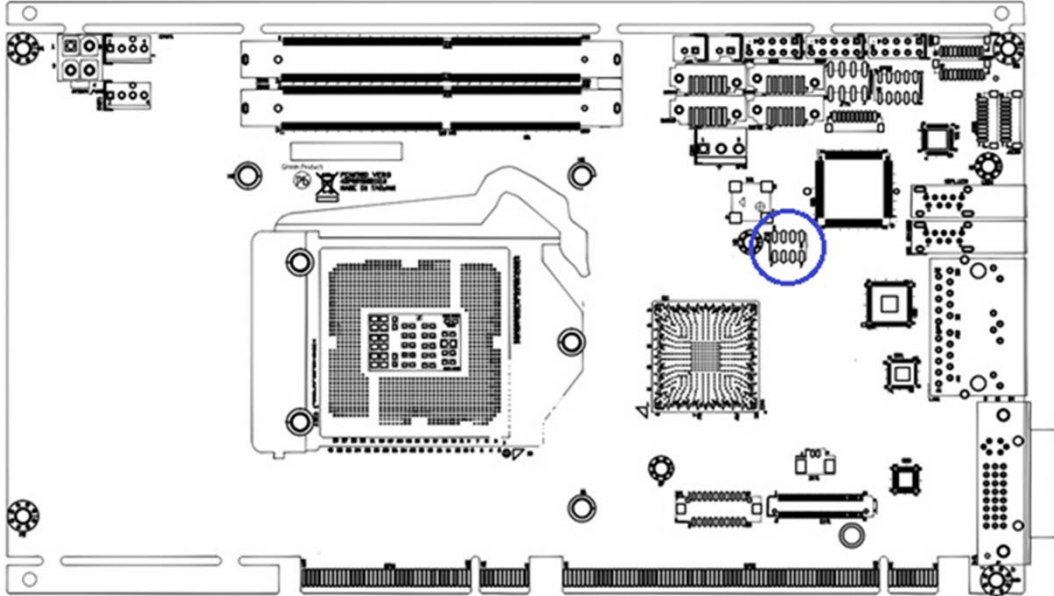


## User's Manual

**PEAK980**  
Ver 1.0

## Jumpers / Headers and Connectors



JFW1

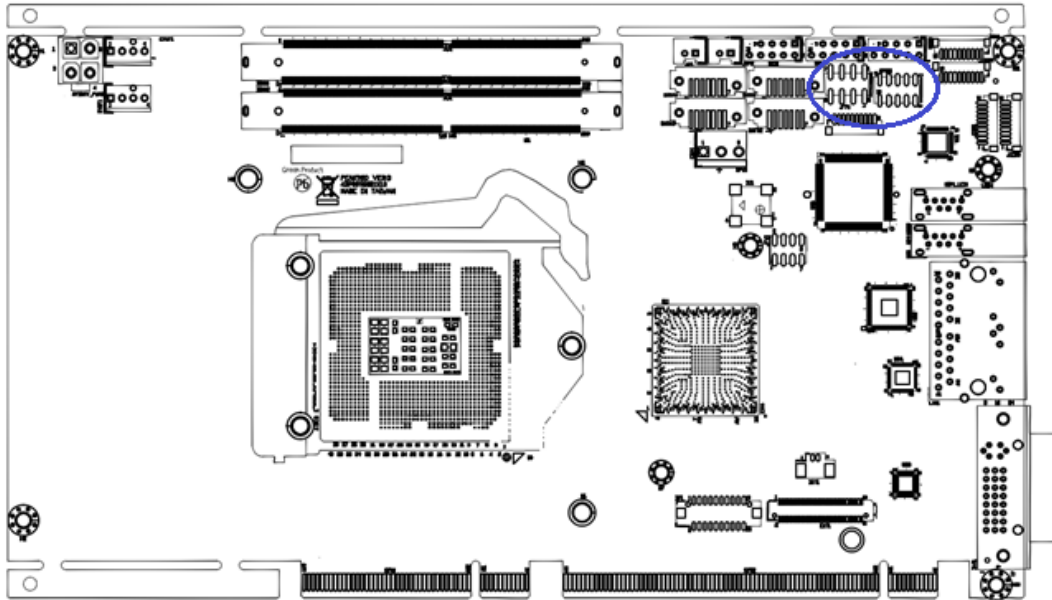
SPI Rom Down Pin header / Clean CMOS

Connector type: PIN-M-180-2.0mm

Pin No.	Function	Pin No.	Function
1	NC	2	S_RTCRST#
3	+3V3_SPI	4	GND
5	SPI_CS#_R	6	SPI_CLK_R
7	SPI_DO_R	8	SPI_DI_R

Clean CMOS Setting:

Pin No.	Function	
1-2	Normal	default
2-4	Clear CMOS	

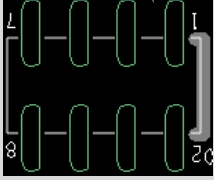


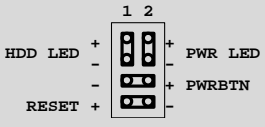
## JFP1

Front panel connector

Connector type: PIN-M-180-2.54mm

Pin No.	Function	Pin No.	Function
1	HDD_LED	2	PWR_LED
3	HDD_LED#	4	GND
5	GND	6	SHB_PWR_BTN#
7	SHB_RST_BTN#	8	GND



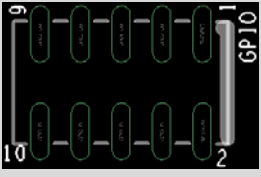


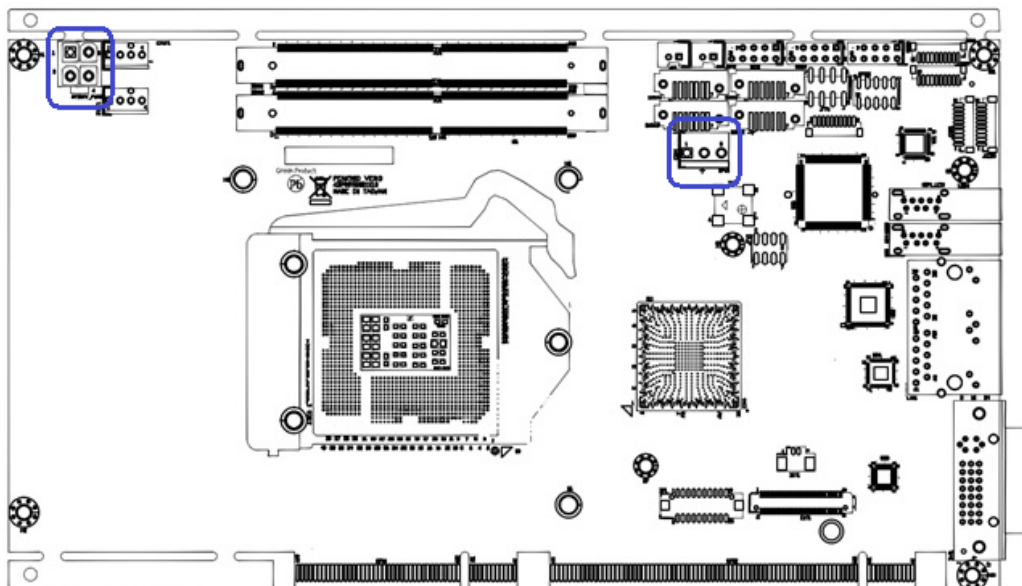
## GPIO1

GPIO connector

Connector type: PIN-M-180-2.0mm

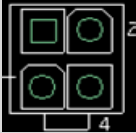
Pin No.	Function	Pin No.	Function
1	+5VGPIO	2	GND
3	GP74(GPO0)	4	GPIO70(GPI0)
5	GP75(GPO1)	6	GPIO71(GPI1)
7	GP76(GPO2)	8	GPIO72(GPI2)
9	GP77(GPO3)	10	GPIO73(GPI3)






ATX12V\_PWR1  
 12V POWER connector  
 Connector type: ATX-F-180-3.5mm

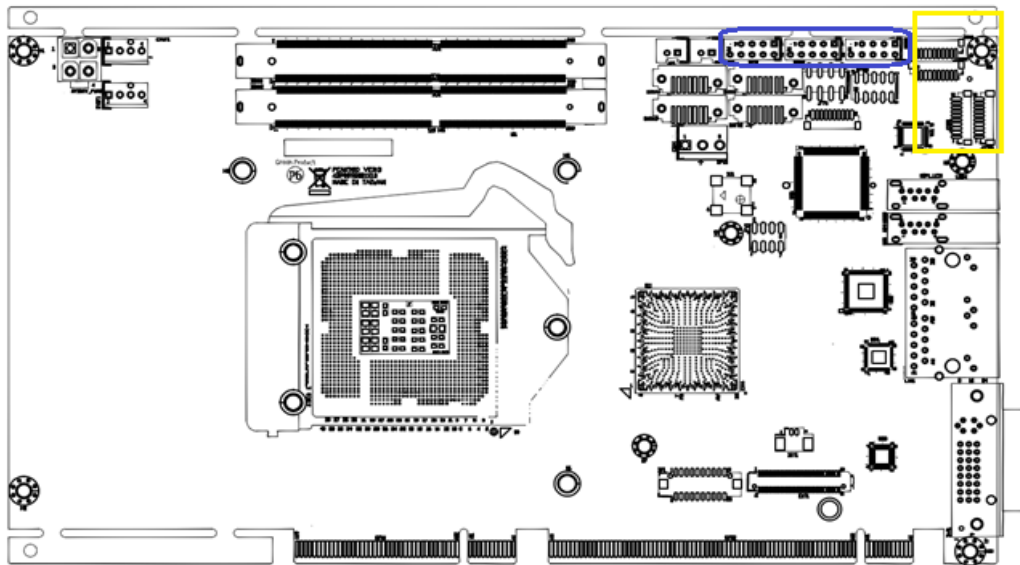
Pin No.	Function	Pin No.	Function
1	GND	2	GND
3	+12V	4	+12V



5PW1  
 DC IN connector  
 Connector type: POWER-M-180-3.96mm


Pin No.	Function
1	+5V
2	GND
3	+5V





USB1 & USB2 & USB3 USB connector  
 Connector type: PIN-M-180-2.54mm

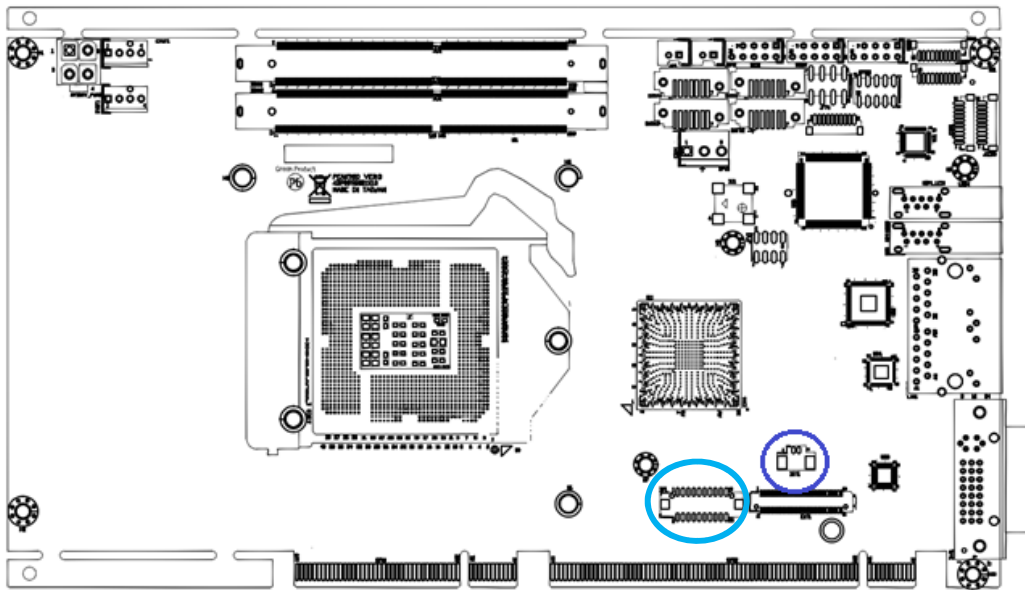
Pin No.	Function	Pin No.	Function
1	+5V_USB2_78	2	+5V_USB2_78
3	USB2N_7	4	USB2N_8
5	USB2P_7	6	USB2P_8
7	GND	8	GND
		10	NC



JCOM1~ JCOM4 (RS422/RS485 by COM 1)  
 COM PORT connector  
 Connector type: WAFER-M-180-1mm

Pin No.	Function	RS422	RS485
1	COM_DCD	TX-	D-
2	COM_RXD	TX+	D+
3	COM_TXD	RX+	
4	COM_DTR	RX-	
5	GND	GND	GND
6	COM_DSR	RTS+	
7	COM_RTS	RTS-	
8	COM_CTS	CTS-	
9	COM_RI	CTS+	
10	+5V	+5V	+5V



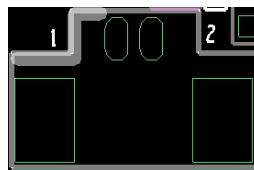


## BAT1

RTC Backup Battery Connector

Connector type: WIRE TO BD 1x2 1.25mm MALE 180D SMD

Pin No.	Function
1	GND
2	3V_BAT

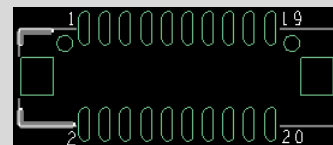


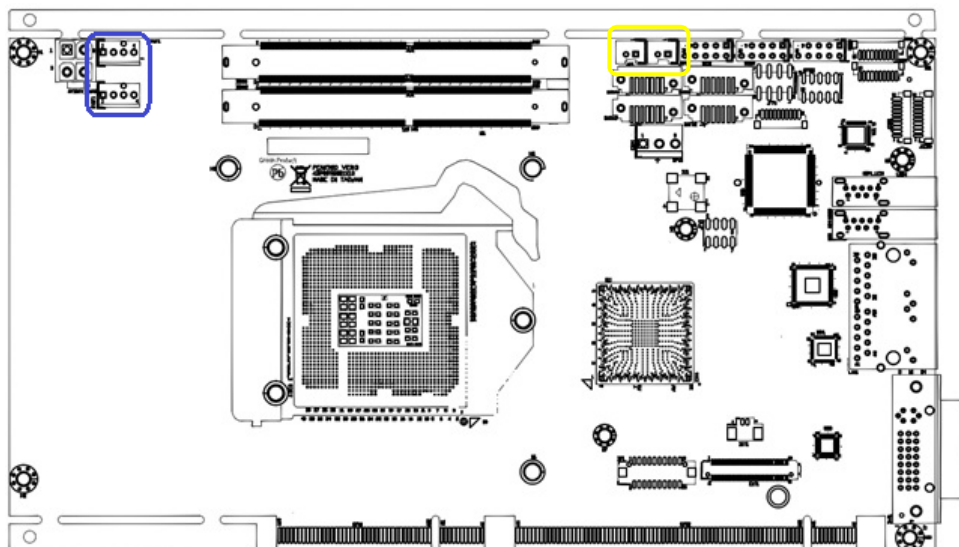
## DP1

Display connector

Connector type: LCD-M-180-1.25mm

Pin No.	Function	Pin No.	Function
1	+3V3_DP_PWR	2	+3V3_DP_PWR
3	GND	4	GND
5	LANE1_N	6	LANE3_N
7	LANE1_P	8	LANE3_P
9	GND	10	GND
11	LANE0_N	12	LANE2_N
13	LANE0_P	14	LANE2_P
15	GND	16	GND
17	AUX_P	18	HPD
19	AUX_N	20	GND





CPUF1/ SYSF1

FAN connector

Connector type: W/FAN-M-180-2.54mm

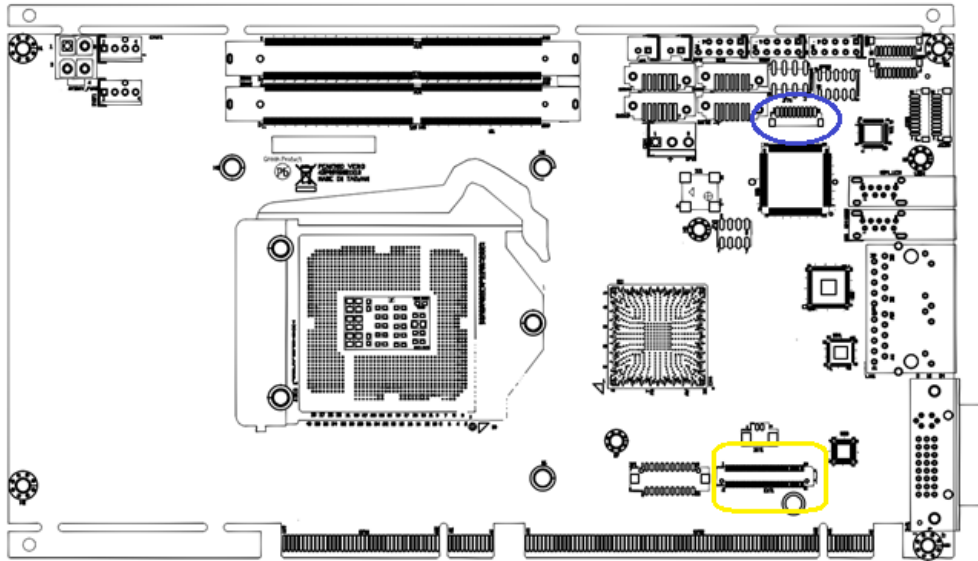
Pin No.	Function	
1	GND	
2	+12V	
3	FANIN1	
4	FANOUT1	

JSP1~JSP2

SATA POWER connector

Connector type: WIRE-M-180-2.5mm

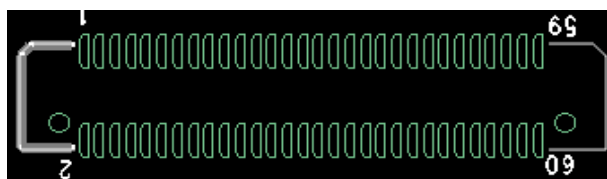
Pin No.	Function	
1	+5V	
2	GND	



JDB1  
 80 PORT connector  
 Connector type: WAFER-M-180-1mm

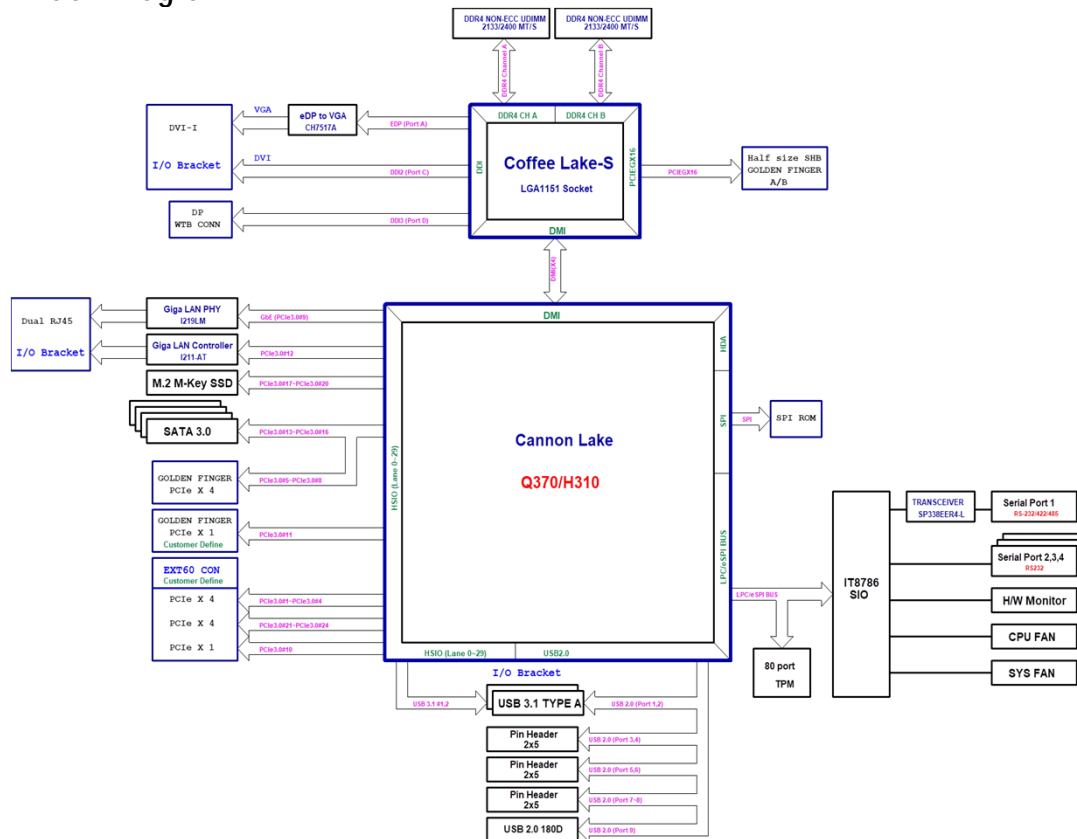
Pin No.	Function
1	GND
2	PLTRST#_BUFF_1
3	CLKOUT_LPC1
4	LFRAME#
5	LPC_D3
6	LPC_D2
7	LPC_D1
8	LPC_D0
9	SERIRQ_R
10	+3V3

High speed connector (EXT60P)  
 Connector type: BD-F-180-0.635mm  
 For 2\*PClex4 , 1\*PClex1





## Black Diagram



## Ordering Information

### Power Requirement

- Power source from Backplane through Golden Finger and AUX +12V 2x2 connector

### Dimensions

- PICMG1.3 Form Factor, 8.9" x 4.9" (228mm x 126mm)

### Environment

- Board level operation temperature: -0°C to 60°C
- Storage temperature: -40°C to 85°C
- Relative humidity:
  - 10% to 95% (operating, non-condensing)
  - 5% to 95% (non-operating, non-condensing)

### Certifications

- Meet CE/FCC Class A

### Backplane Support List:

- NBP1468 (P/N:8850NBP14681)
- NBP1257 (P/N:8850NBP12570)
- NBP1052 (P/N:8850NBP10521)
- NBP05P2 (P/N:8850NBP05P20)
- NBP06E5 (P/N:8850NBP06E50)
- NBP06P2 (P/N:8850NBP06P20)

### Bare bone

#### PEAK980 (P/N: 93710980Q370 )

Intel® 8th/9th Coffee lake Core™ I TDP 95W, Q370, LGA1151, 2x DDR4 up to 64GB, DVI-I, DP, 2 x USB 3.1 (Gen1), 6x USB2.0, 2x GbE LAN, 4x SATAIII, 3x RS232, 1x RS232/422/485, 1x 60pin connector, 1x M.2.

#### PEAK980-H (P/N:93710980H310 )

Intel® 8th/9th Coffee lake Core™ I TDP 95W, H310, LGA1151, 2x DDR4 up to 64GB, DVI-I, DP, 2 x USB 3.1 (Gen1), 6x USB2.0, 2x GbE LAN, 4x SATAIII, 3x RS232, 1x RS232/422/485.

### Packing

- 7P+15P SATA cable \*1
- 2 COM ports + bracket \*1
- 2 USB 2.0 ports + bracket \*1
- 3 Pin Power cable

### Optional Accessories

- DVI-I Y cable (P/N:343230280003)
- TPM 2.0 module kit (P/N:8850TPM20001)
- DP cable (P/N:343420000010)