

Main Features

- Greater powers delivery capability
- System host board and add-on card
- Follows PICMG 1.3 mount holes and compatible with 4U chassis
- Supports :
1 SHB slot. 8 PCIe x 4, 4 PCIe x 1
- Supports standard ATX power connector

Product Overview

The BP 8648S is a 14-slot backplane with 1 SHB slot, 8 PCIe x 4, 4 PCIe x 1. It follows PICMG 1.3 platform specifications and supports ATX power supply.

Specifications

System Architecture

- 14-slot backplane

Slots

- 1 SHB slot
- 8 PCIe x 4
- 4 PCIe x 1

Power input

- 24 PIN ATX Power Connector
- 8 PIN ATX Standard Power Connector Support +12V

Dimension

- 317 x 273 (mm)

Environment

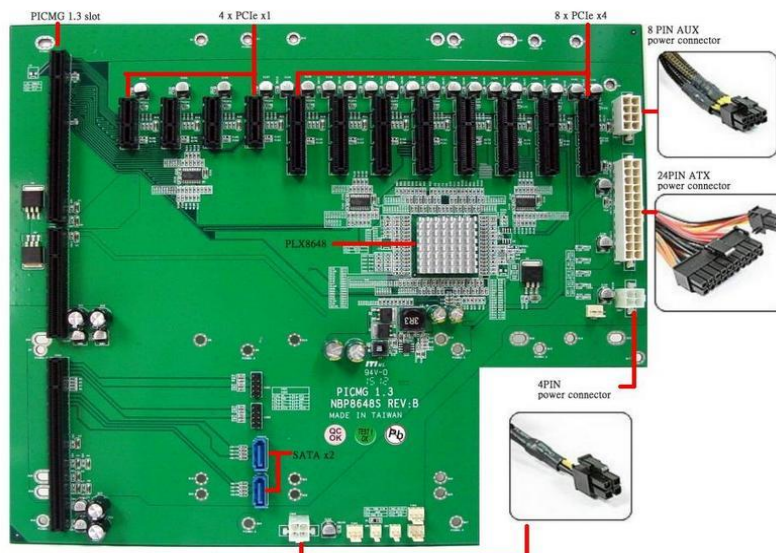
- Board level operating temperatures: 0°C to 60°C
- Storage temperatures: -20°C to 80°C
- 6-layer PCB to reduce noise and keep lower impedance

Relative humidity:

- 0% to 90% (operating, non-condensing)
- 0% to 95% (non-operating, non-condensing)

Certifications

- CE approval
- FCC Class A



Dimension Drawing

